

## Application

Designed to house Human-Machine Interfaces (HMI) and electrical and electronic controls, instruments and components. Provides a degree of protection from dust, oil and water.

## Construction

- 0.075" carbon steel.
- Seams continuously welded and ground smooth.
- Reinforced with mounting provisions for suspension or pedestal mounting.
- Concealed hinge access door with provisions for subpanel.
- Removable front cover for easy installation of cutouts, HMI and components.
- Pour in place oil and water resistant gasket.
- Black quarter turn latches.
- Latches are opened or closed with a screwdriver.
- Ground studs on door and body.

## Options

Optional tamper-resistant inserts or padlocking handles are available.

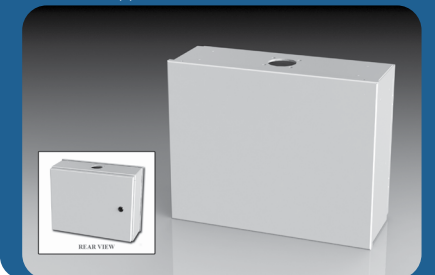
## Finish

RAL 7035 gray powder coated inside and out. Optional subpanels are powder coated white.

## IS4 Industry Standards

NEMA Type 3R, 4, 12 & Type 13  
UL Listed Type 3R, 4 & 12  
CSA Type 3R, 4 & 12  
IEC 60529 IP66

\*\*\*To maintain Type 3R listing, drainage is required. Install equally rated drainage device or drill a 1/8 to 1/4 inch hole in the bottom center of the enclosure, approximately 1 inch from the right, and 1 inch from the left for drainage, use listed rain-tight or wet location hubs. Drip shield over the door is recommended for all outdoor applications.



## HMI ENCLOSURES

Catalog No.	Height (A)	Width (B)	Depth (C)	Industry Standard	Subpanel (P3)		
					Catalog No.	Panel Height (D)	Panel Width (E)
<a href="#">SCE-12HMI1606LP</a>	12.00	16.00	6.00	IS4	<a href="#">SCE-12P10</a>	11.00	9.00
<a href="#">SCE-12HMI1610LP</a>	12.00	16.00	10.00	IS4	<a href="#">SCE-12P10</a>	11.00	9.00
<a href="#">SCE-14HMI1806LP</a>	14.00	18.00	6.00	IS4	<a href="#">SCE-14P12</a>	13.00	11.00
<a href="#">SCE-14HMI1810LP</a>	14.00	18.00	10.00	IS4	<a href="#">SCE-14P12</a>	13.00	11.00
<a href="#">SCE-16HMI2006LP</a>	16.00	20.00	6.00	IS4	<a href="#">SCE-16P14</a>	15.00	13.00
<a href="#">SCE-16HMI2010LP</a>	16.00	20.00	10.00	IS4	<a href="#">SCE-16P14</a>	15.00	13.00
<a href="#">SCE-20HMI2406LP</a>	20.00	24.00	6.00	IS4	<a href="#">SCE-20P18HMI</a>	19.00	17.00
<a href="#">SCE-20HMI2410LP</a>	20.00	24.00	10.00	IS4	<a href="#">SCE-20P18HMI</a>	19.00	17.00

For Reference View

